

RU1Hs ZONING

NOTE:
BUILDER/OWNER
RESPONSIBLE
TO ENSURE BACKFILL
LEVELS MEET ALL CODES.

NOTE:
INFORMATION TO BE USED AS A
GUIDELEINE ONLY, AND IS SUBJECT TO
CHANGE.
DRAWING IS NOT INTENDED FOR DESIGN
PURPOSES. FINISHED GRADES MUST BE
FIELD VERIFIED.

ALL DISTANCES SHOWN ARE IN METRES AND
DECIMALS THEREOF.
ALL DIMENSIONS, ELEVATIONS
AND SERVICES SHOWN MUST BE CONFIRMED
BY CONTRACTOR PRIOR TO EXCAVATION.
BUILDER/OWNER IS LIABLE FOR ANY COSTS
INCURRED DUE TO AN ERROR IN THE SITE
PLAN IF CONSTRUCTION STARTS PRIOR TO THIS
PLAN BEING APPROVED BY THE LOCAL
APPROVING AUTHORITY.

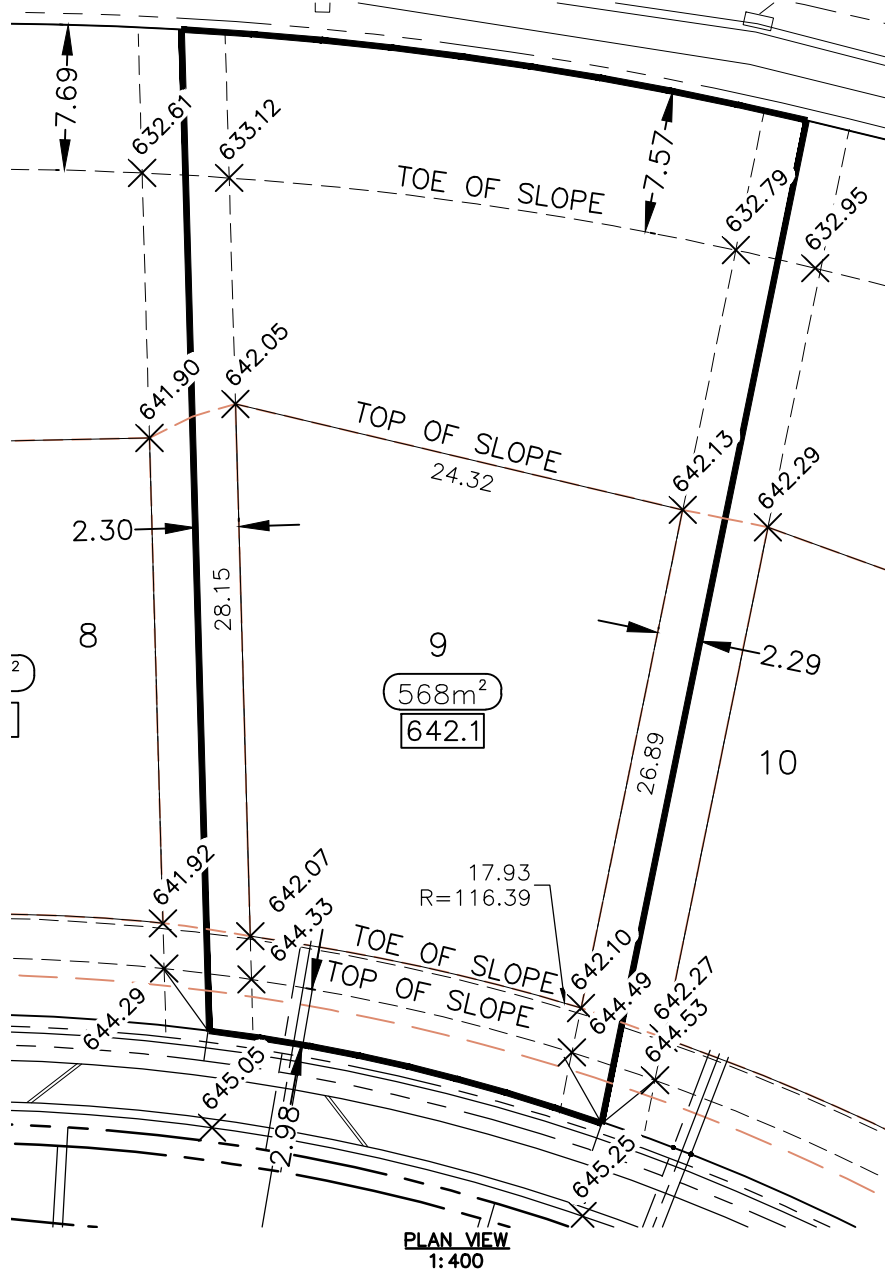
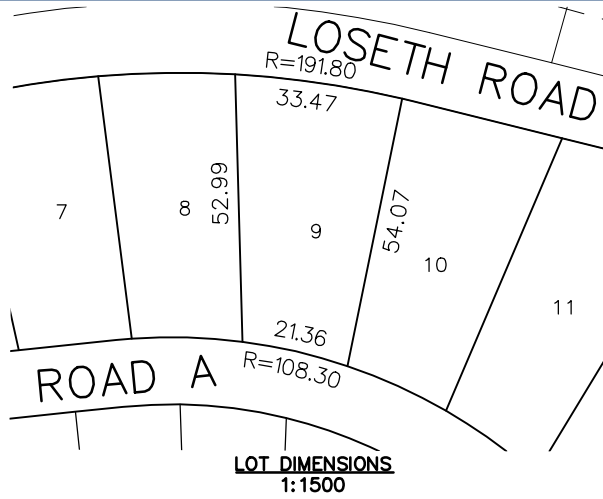
LEGEND

- PAD ELEVATION 658.2
- BLDG. ENVELOPE AREA 1197.1m²
- FINISH GRADE 665.41
- BLOWOFF ← BO
- SAN MANHOLE ● S
- STORM MANHOLE ● D
- CLEANOUT ● CO
- CATCH BASIN ■ CB
- DRYWELL ● DW
- POWER POLE ● PP
- LAMP STANDARD ■ LS
- INSPECTION CHAMBER • IC
- CURB STOP • CS
- FIRE HYDRANT ⊕ HYD
- WATER VALVE ⊕
- DRIVEWAY ■
- TRANSFORMER □
- SERVICE BOXES ■
- SERVICE VAULTS ■
- BUILDERS SWALE →

UTILITIES

- WATER ————
- SAN. SEWER - - - - -
- STORM SEWER - - - - -
- GAS - - - - -
- TELUS/FORTIS/SHAW - - - - -
- GRADING BREAKS - - - - -
- LEGAL SETBACK - - - - -

DATE OF REVISION:



LOT 9 BLOCK PLAN 71697

SCALE: AS SHOWN

DATE: 2017-02-14

KIRSCHNER MOUNTAIN
PHASE 4



LOT AREA: 1458 m²