

**RU1Hs ZONING**

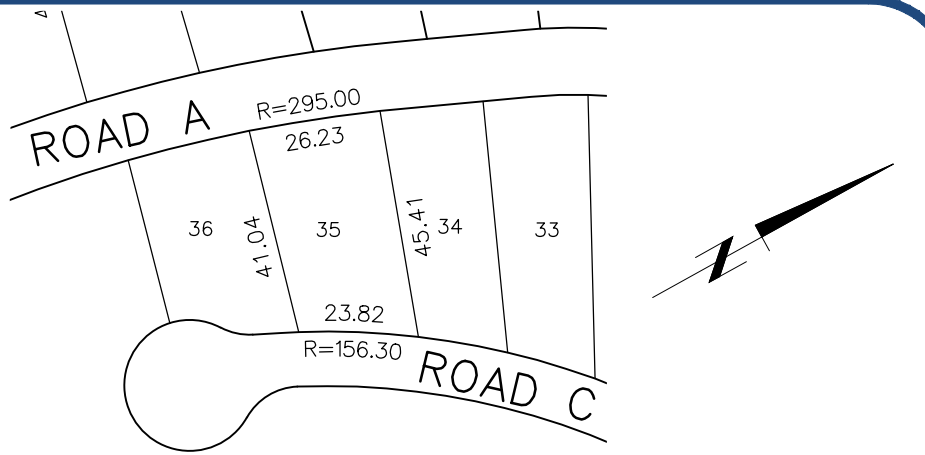
**NOTE:**  
 BUILDER/OWNER RESPONSIBLE TO ENSURE BACKFILL LEVELS MEET ALL CODES.

**NOTE:**  
 INFORMATION TO BE USED AS A GUIDELEINE ONLY, AND IS SUBJECT TO CHANGE.  
 DRAWING IS NOT INTENDED FOR DESIGN PURPOSES. FINISHED GRADES MUST BE FIELD VERIFIED.

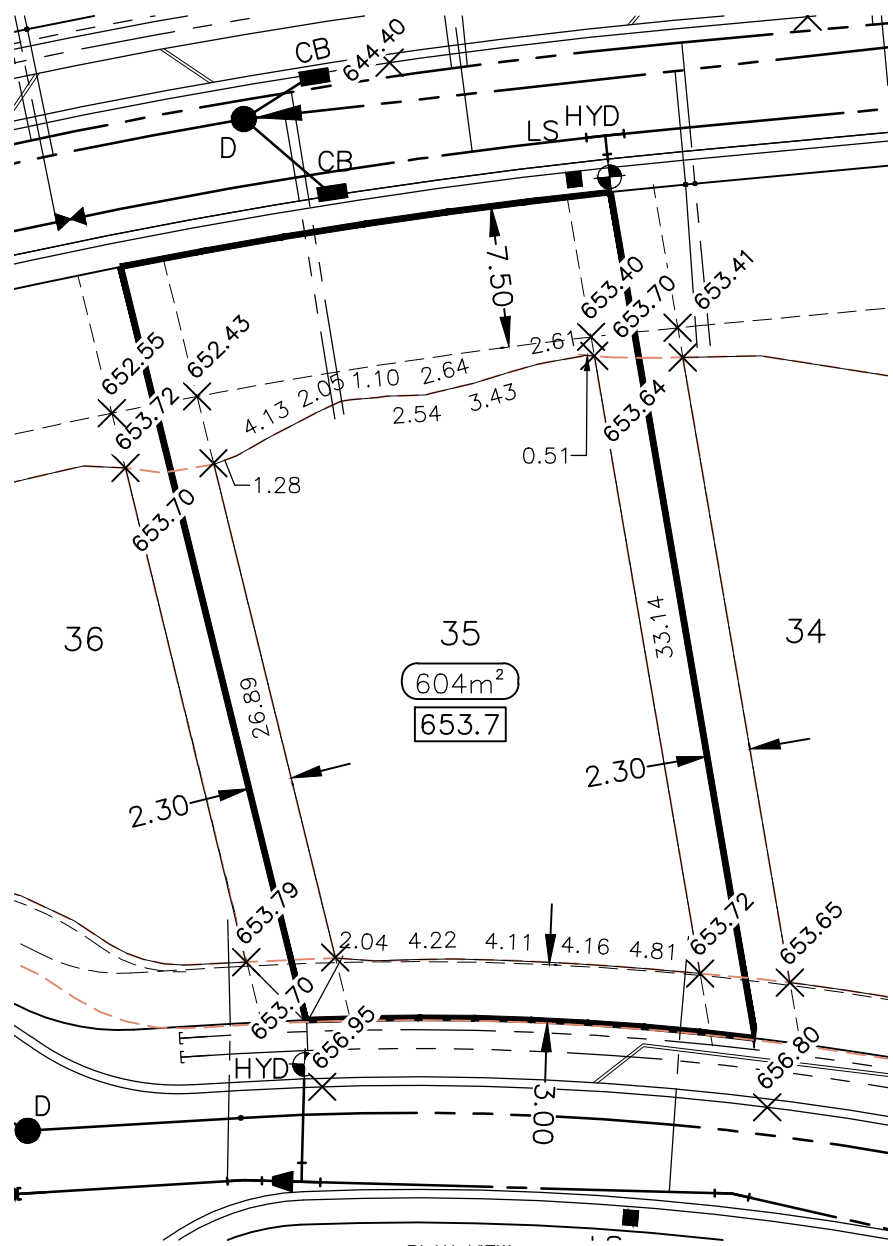
ALL DISTANCES SHOWN ARE IN METRES AND DECIMALS THEREOF.  
 ALL DIMENSIONS, ELEVATIONS AND SERVICES SHOWN MUST BE CONFIRMED BY CONTRACTOR PRIOR TO EXCAVATION.  
 BUILDER/OWNER IS LIABLE FOR ANY COSTS INCURRED DUE TO AN ERROR IN THE SITE PLAN IF CONSTRUCTION STARTS PRIOR TO THIS PLAN BEING APPROVED BY THE LOCAL APPROVING AUTHORITY.

**LEGEND**

- PAD ELEVATION 658.2
  - BLDG. ENVELOPE AREA 1197.1m<sup>2</sup>
  - FINISH GRADE 665.41
  - BLOWOFF ← BO
  - SAN MANHOLE ● S
  - STORM MANHOLE ● D
  - CLEANOUT ● CO
  - CATCH BASIN ■ CB
  - DRYWELL ● DW
  - POWER POLE ● PP
  - LAMP STANDARD ■ LS
  - INSPECTION CHAMBER ● IC
  - CURB STOP ● CS
  - FIRE HYDRANT ● HYD
  - WATER VALVE ●
  - DRIVEWAY ■
  - TRANSFORMER ■
  - SERVICE BOXES ■
  - SERVICE VAULTS ■
  - BUILDERS SWALE →
- 
- UTILITIES**
- WATER ————
  - SAN. SEWER - - - - -
  - STORM SEWER - - - - -
  - GAS - - - - -
  - TELUS/FORTIS/SHAW - - - - -
  - GRADING BREAKS - - - - -
  - LEGAL SETBACK - - - - -



**LOT DIMENSIONS**  
1:1500



**PLAN VIEW**  
1:400

DATE OF REVISION:  
 \_\_\_\_\_  
 \_\_\_\_\_

|     |    |       |            |                 |                  |
|-----|----|-------|------------|-----------------|------------------|
| LOT | 35 | BLOCK | PLAN 71697 | SCALE: AS SHOWN | DATE: 2017-02-14 |
|-----|----|-------|------------|-----------------|------------------|

**KIRSCHNER MOUNTAIN  
 PHASE 4**



LOT AREA: 1062 m<sup>2</sup>